



CO-ORDINATION OF NOTIFIED BODIES
PPE Regulation 2016/425

PPE-R/10.045

Version 1

RECOMMENDATION FOR USE

Number of pages: 1

Approval stage :

Approved on :

Origin : RICOTEST

Vertical Group

18-12-2002

Horizontal Committee

15-09-2019

EU PPE Working Group

07-02-2020

Question related to PPE Regulation PPE Guidelines

EN/prEN: EN ISO

Other:

20345:2011/EN 15090:2012

Article:

Annex:

Clause: 5.8.1.3 (EN ISO 20345); 6.7.1 (EN 15090)

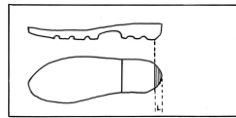
Key words: Heel shape

Question:

EN ISO 20345:2011, 5.8.1.3 specifies the depth of the sole cleats. EN 15090:2012, 6.7.1 states that "there are no continuous linear transverse valleys across the sole.

In some cases, the back part of the sole in the heel area is not flat and it is constituted of small linear cleats (see figure hereunder)

This heel shape should not be excluded because it can improve the footwear properties (for instance the slip resistance)



Solution:

The requirement of EN ISO 20345:2011, 5.8.1.3 (the depth of the sole cleats) and EN 15090:2012, 6.7.1 (no continuous linear transverse valley across the sole) do not apply to any inclined area at the back part of the heel if L (see figure) if this is lower than the depth of the small linear cleats in the heel area