



CO-ORDINATION OF NOTIFIED BODIES
PPE Regulation 2016/425

PPE-R/11.090
Version 1

RECOMMENDATION FOR USE

Number of pages: 1	Approval stage :	Approved on :
Origin : Vertical Group 11 'Protection against Falls from a Height'	<input checked="" type="checkbox"/> Vertical Group	21.04.2018
	<input checked="" type="checkbox"/> Horizontal Committee	21.04.2018
	<input type="checkbox"/> EU PPE Working Group	

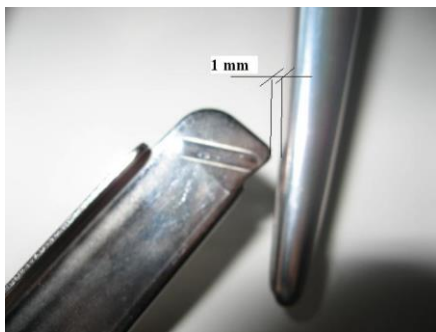
Question related to PPE Regulation EN/prEN: EN 362:2004 Other:

Article: Annex: Clause:

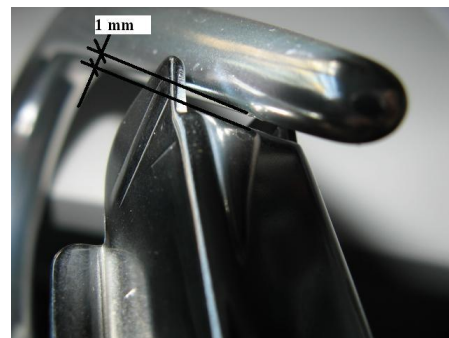
Key words:
EN 362:2004, latch distance from connector body

Question:
Point 4.4.1 of EN 362:2004 standard says that "the gate locking feature shall withstand a force of $(1 \pm 0,02)$ kN without separating from the latch by more than 1 mm". Which is the correct interpretation?

Solution:
The distance of the part of the latch of less than 1 millimetre from the body of the connector must be considered as the distance of the latch teeth (picture 1) and not of the part of the latch which touches the body (picture 2).



Picture 1: distance to consider



Picture 2: distance not to be considered